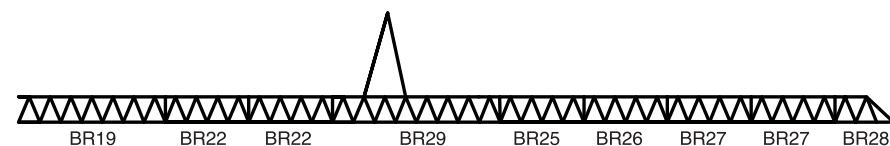
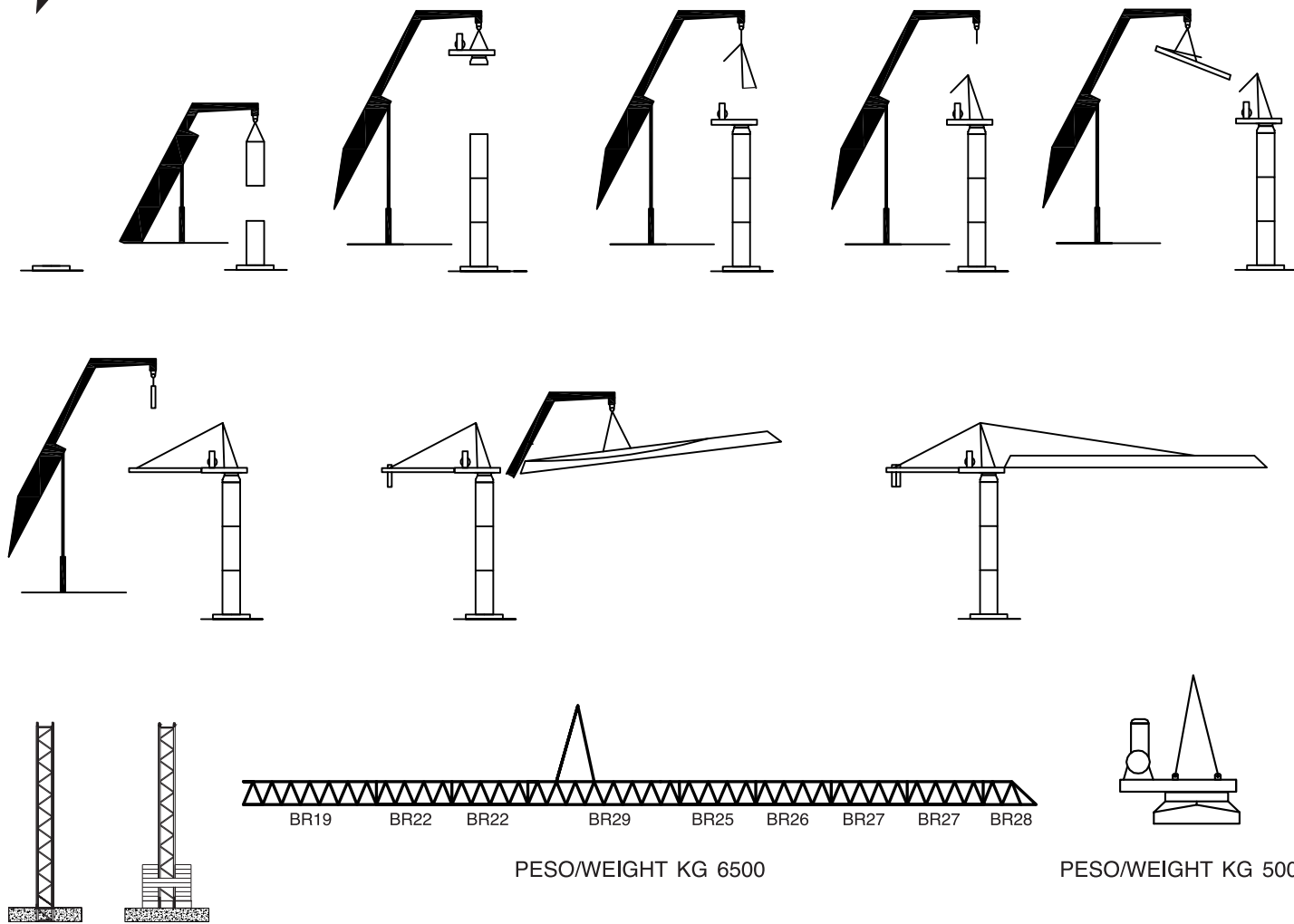




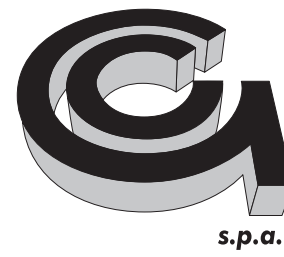
MONTAGGIO - ASSEMBLING



PESO/WEIGHT KG 6500

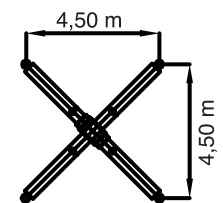
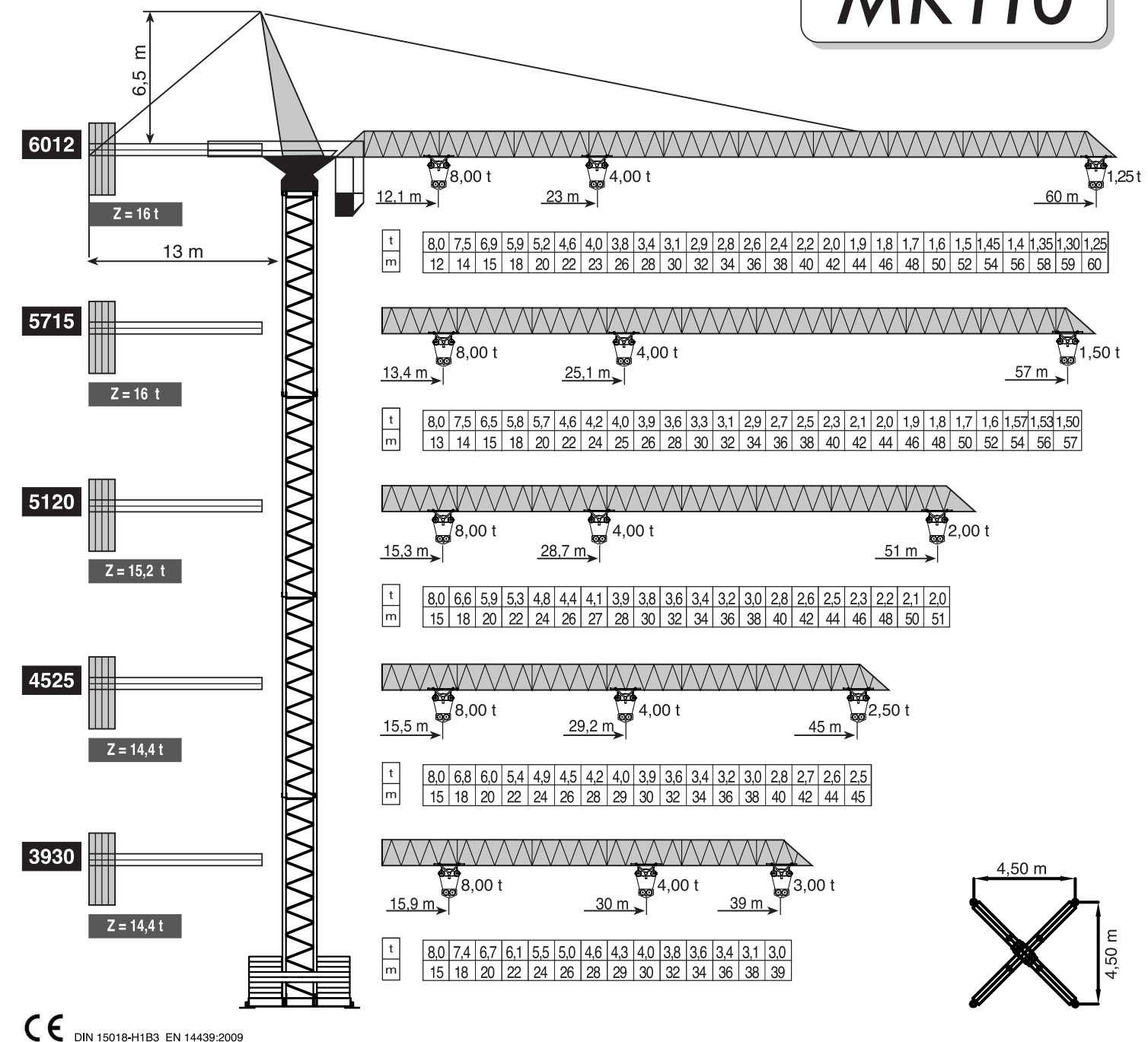
PESO/WEIGHT KG 5000

DIMENSIONE TORRE (mt) / MAST DIMENSION											
ALTEZZA LIBERA HEIGHT (mt)	1,91 x 1,91 (mt)		1,96 x 1,96 (mt)			2,02 x 2,02 (mt)		2,50 x 2,50 (mt)		TELAIO INTERNO	TELAIO RACCORDO
	4,20	8,40	4,20	8,40	11,20	4,20	8,40	5,20	5,50	0,60	
34,90	5	1								1	
39,10	6	1								1	
43,30	5	1		1						1	
47,50			8	1						1	
55,90						2	1			1	
59,30			8			5		7	1	1	
63,50						5		7	1	1	
67,70						6		7	1	1	
71,90						1		7	1	1	
76,10						7		8	1	1	
50,40			2	3							
53,20				1		5					
61,60				1		6					
73,80						5	6			1	
82,20						6	6			1	



MK110

Dati tecnici, disegni e fotografie sono indicativi e possono essere modificati senza preavviso - Technical data, drawings and pictures are displayed purely as an indication and subject to modification without prior notice.

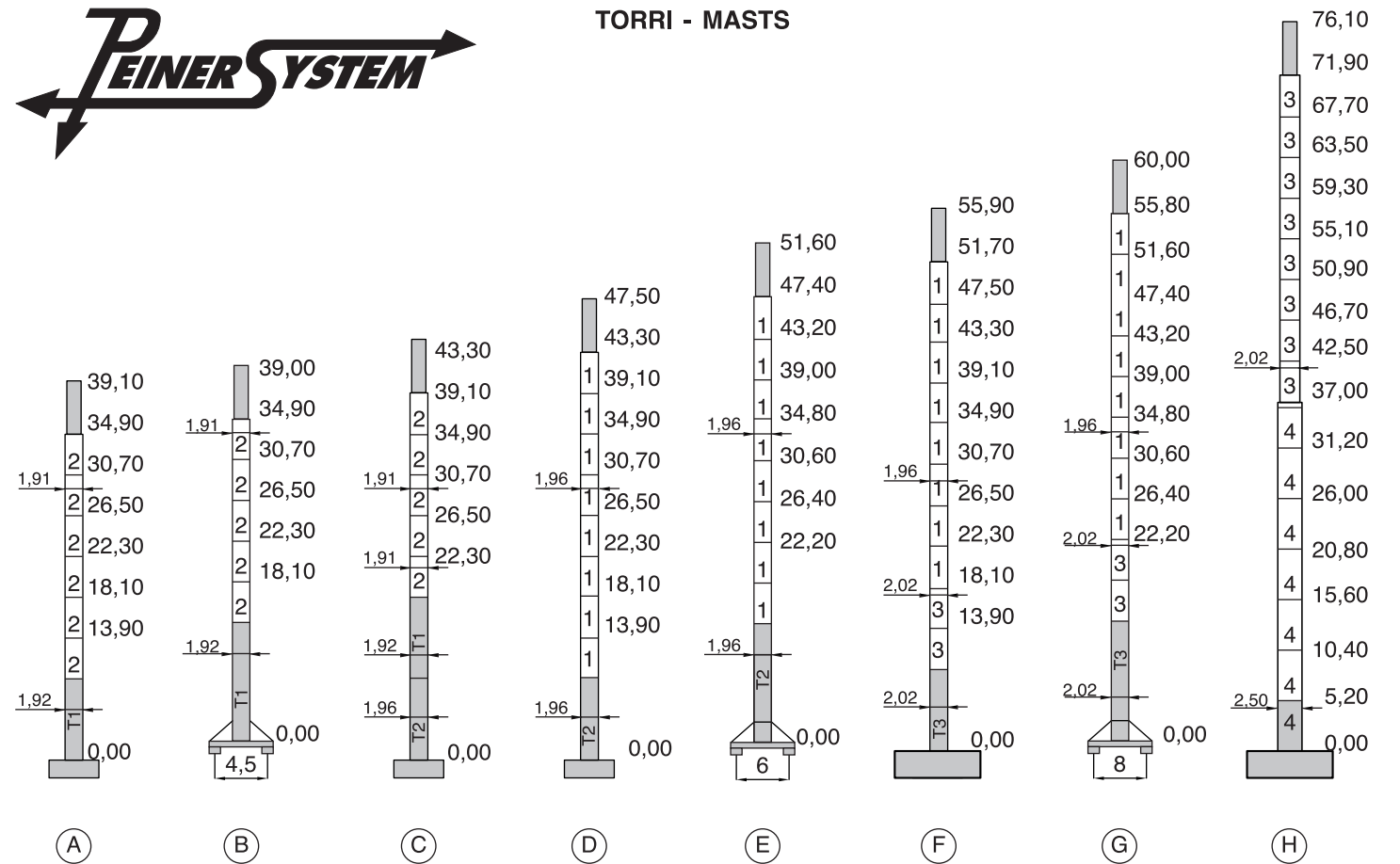


ALTEZZA MASSIMA CON ANCORAGGI MT. 200
MT. 200 POSSIBLE MAX HEIGHT WITH ANCHORAGE FRAME

CE DIN 15018-H1B3 EN 14439:2009

MK110 - Grafica Anastasiana D'Agostina - Tel. 081 530 70 95

DENOMINAZIONE DENOMINATION	SCHEMA/SKETCH	A (m)	B (m)	C (m)	PESO/WEIGHT (kg)
ELEMENTO BRACCIO BR19 JIB ELEMENT BR19		10,30	1,46	1,75	1650
ELEMENTO BRACCIO BR22 JIB ELEMENT BR22		5,80	1,46	1,75	750
ELEMENTO BRACCIO BR22 JIB ELEMENT BR22		5,80	1,46	1,75	750
ELEMENTO BRACCIO BR29 JIB ELEMENT BR29		11,75	1,46	1,75	1460
ELEMENTO BRACCIO BR25 JIB ELEMENT BR25		5,80	1,46	1,75	490
ELEMENTO BRACCIO BR26 JIB ELEMENT BR26		5,80	1,46	1,75	450
ELEMENTO BRACCIO BR27 JIB ELEMENT BR27		5,80	1,46	1,75	350
ELEMENTO BRACCIO BR27 JIB ELEMENT BR27		5,80	1,46	1,75	350
ELEMENTO BRACCIO BR28 JIB ELEMENT BR28		3,00	1,46	1,75	170
GRUPPO ROTAZIONE SLEWING GROUP		3,80	2,30	3,15	5000
CUSPIDE SPIRE		6,97	1,60	1,13	1300
CONTROFRECCIA COUNTERJIB		13,00	1,60	0,50	1020
TELAIO BASE T1 BASE ELEMENT T1		8,59	1,96	1,96	1680
TELAIO INTERMEDIO 2 INTERMEDIATE ELEMENT 2		4,42	1,96	1,96	900
TELAIO INTERNO INNER ELEMENT		8,45	1,75	1,75	2280
TELAIO BASE T2 BASE ELEMENT T2		8,69	2,04	2,04	2900
TELAIO INTERMEDIO 1 INTERMEDIATE ELEMENT 1		4,42	2,04	2,04	1580
TELAIO BASE T3 BASE ELEMENT T3		8,69	2,08	2,08	3480
TELAIO INTERMEDIO 3 INTERMEDIATE ELEMENT 3		4,42	2,08	2,08	1650
TELAIO INTERMEDIO 4 INTERMEDIATE ELEMENT 4		6,00	2,70	2,70	2200
TORRE MONOLITICA 1.96 M MONOLITIC TOWER 1.96 M		11,80 9,00	2,04 2,04	2,04 2,04	3000 2200
TORRE MONOLITICA 2.02 M MONOLITIC TOWER 2.02 M		9,00	2,08	2,08	3100


ARGANI DI SOLLEVAMENTO - HOISTING WINCHES

Hp	m/1'	Kg	Kg	Hp	m/1'	Kg	Kg
40	66/33	2000	4000	50	72/36	2250	4500
	45/22	3000	6000		48/24	3500	7000
	30/15	4000	8000		35/17	4000	8000
	25/12	4000	8000		25/12	4000	8000
	5/2,5	4000	8000		5/2,5	4000	8000

SENZA CARICO LA VELOCITÀ DI SOLLEVAMENTO AUMENTA DEL 20%
HOISTING SPEED INCREASE MORE THAN 20% WITHOUT LOAD

380/440V	ARGANO	POTENZA MAX	GRUPPO GEN.
50/60 HZ	WINCH	MAIN SUPPLY	GENER.
⚡	40 HP 50 HP	50 KVA 65 KVA	85 KVA 100 KVA

	3 KW	10/25/50 m/1'	R56
	2x65 Nm	0-0,8 rpm	ROT. F.

- 1 - 1,96 x 1,96 mt
- 2 - 1,91 x 1,91 mt
- 3 - 2,02 x 2,02 mt
- 4 - 2,50 x 2,50 mt

**VERSIONE CON TORRE MONOLITICA
MONOLITIC TOWER VERSION**
