

■ 1.7x1.7  
SK1700

■ 1.21x1.21  
SH1210

FEM	Hg (m)		FEM	Hg (m)	
	○	□		○	□
CATR	36.7	35.9	CATR	55.6	54.8
CAF	42	41.2	CAF	54.9	54.1
TEF	41.6	40.8	TEF	58.8	58
TRF	41.5	40.7	TRF	58	57.2
C25			C25		
CATR	36.7	35.9	CATR	51.7	50.9
CAF	39	38.2	CAF	51	50.2
TEF	38.6	37.8	TEF	54.9	54.1
TRF	38.5	37.7	TRF	54.1	53.3
D25			D25		
CATR	33.7	32.9	CATR	43.9	43.1
CAF	33	32.2	CAF	43.2	42.4
TEF	32.6	31.8	TEF	51	50.2
TRF	32.5	31.7	TRF	50.2	49.4

①

--- CATR  
--- CATC

CAF

TEF

TRF

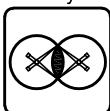
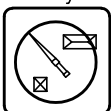
PRT-TR

PRT

Power Control

ASys

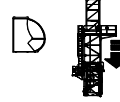
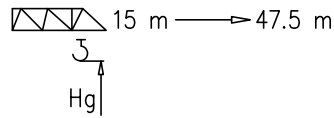
ACsys



FEM 1.001 - A4  
EN 14439 - C25 - D25

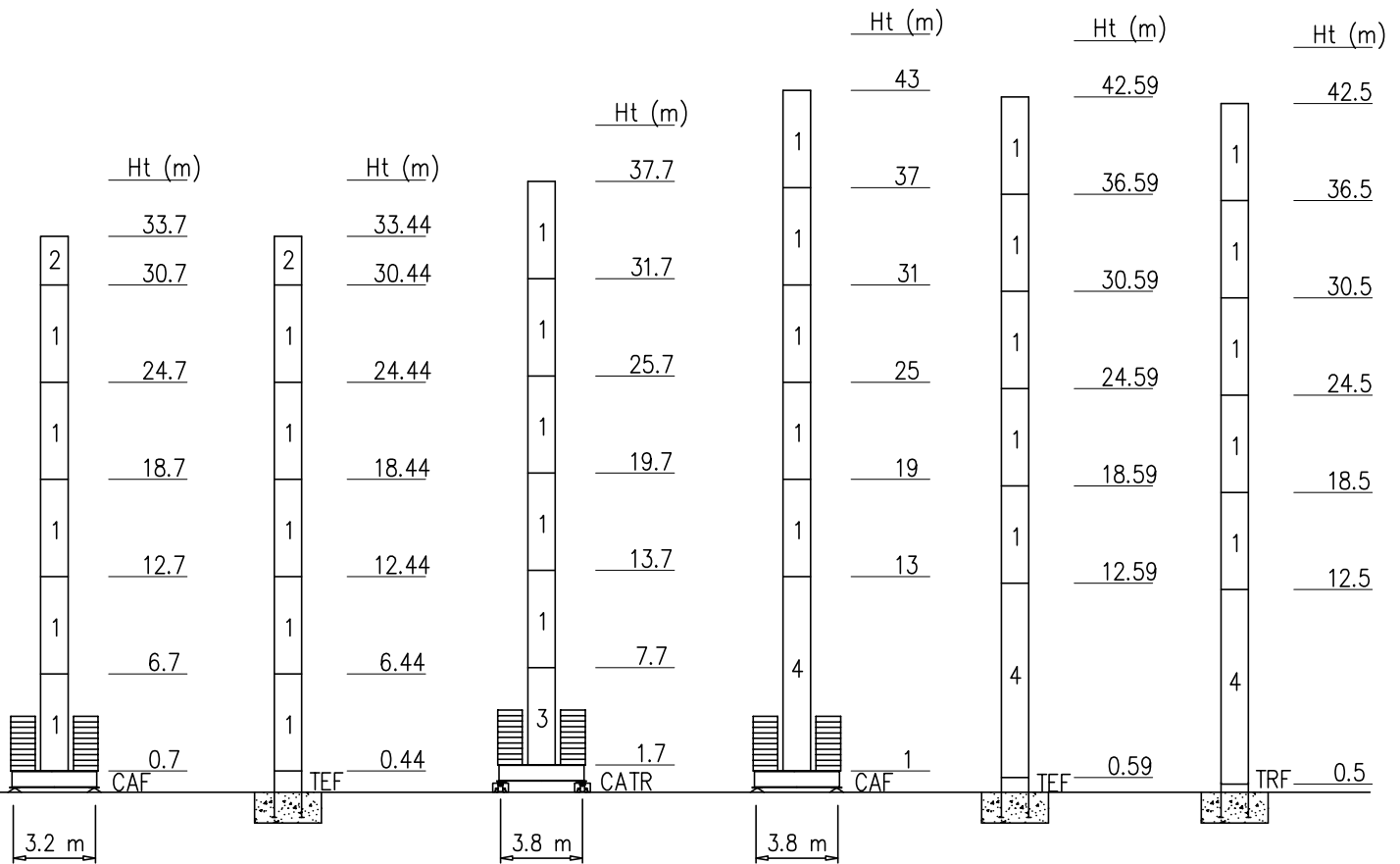
Torre/Reazioni – Masts/Reactions – Mat/Réactions – Maste/Eckdrücke – Mästil/Reacciones – Tramo/Reacções

SH1210 FEM

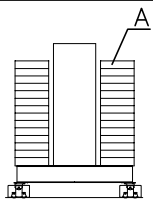


4	B0120	2/2
3	B0060	2/2
2	ST030	2/2
1	ST060	2/2

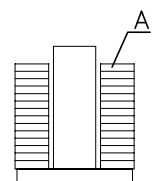
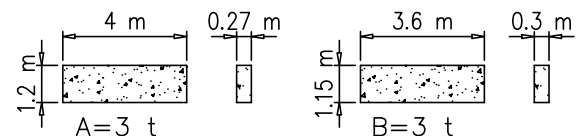
○ Hg=Ht-1 m  
 □ Hg=Ht-1.8 m



Peso zavorra – Ballast weight – Poids du lest – Ballastgewicht – Peso de lastre



SH1210						
H-CATR (m)		13.7	19.7	25.7	31.7	37.7
(t)		36	54	54	60	60
n°		12xA	18xA	18xA	20xA	20xA

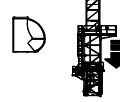
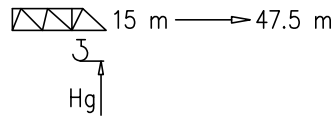


SH1210					
H-CAF32 (m)		18.7	24.7	30.7	33.7
(t)		36	54	54	54
n°		12xB	18xB	18xB	18xB

SH1210							
H-CAF38 (m)		13	19	25	31	37	43
(t)		36	54	54	54	60	78
n°		12xA	18xA	18xA	18xA	20xA	26xA

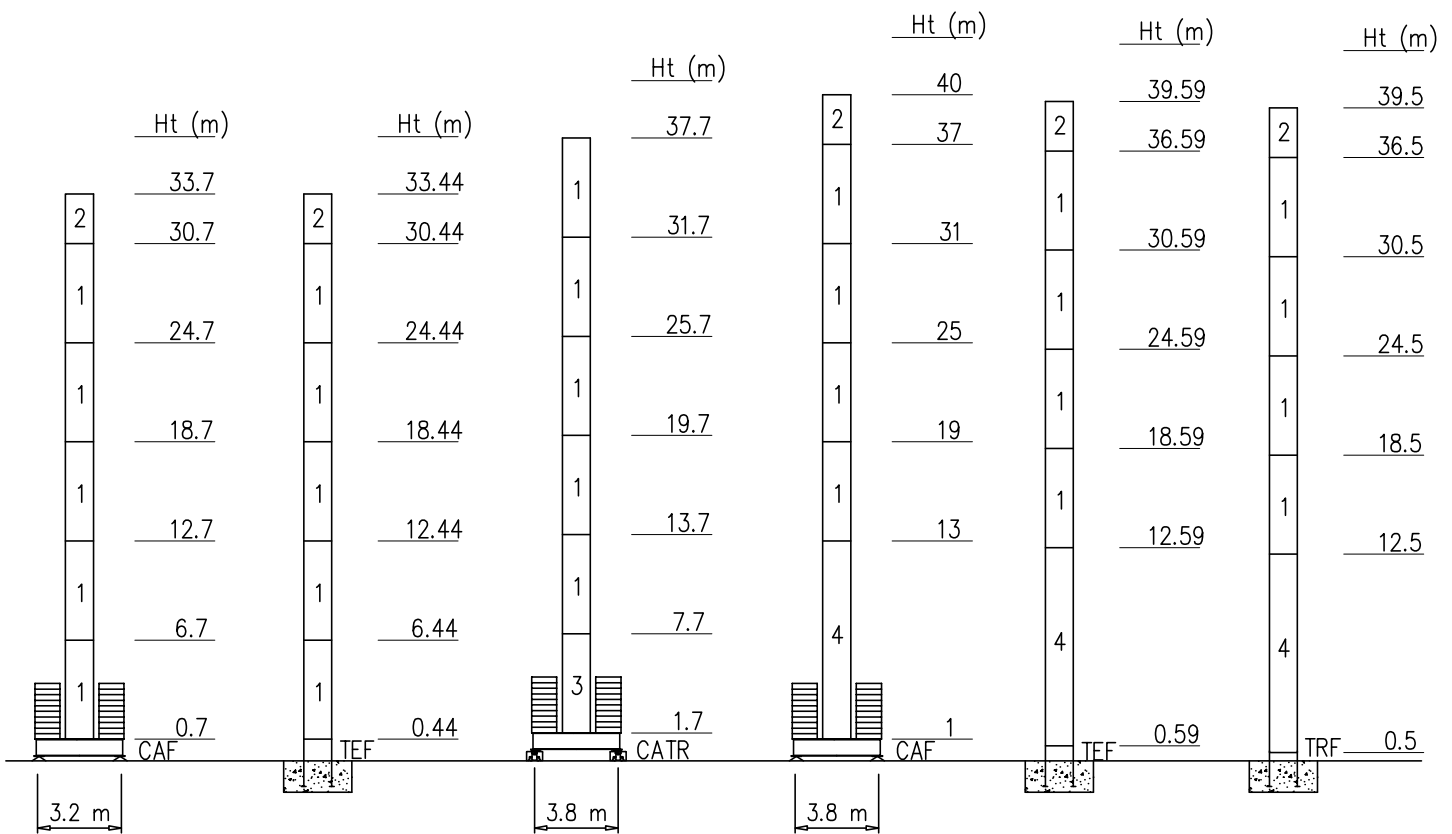
Torre/Reazioni – Masts/Reactions – Mat/Réactions – Maste/Eckdrücke – Mástil/Reacciones – Tramo/Reacções

SH1210 EN14439-C25

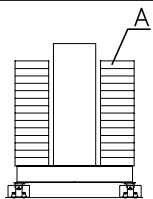


4	B0120	2/2
3	B0060	2/2
2	ST030	2/2
1	ST060	2/2

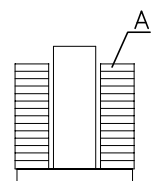
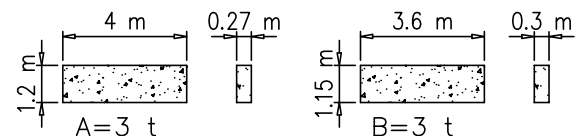
- Hg=Ht-1 m
- Hg=Ht-1.8 m



Peso zavorra – Ballast weight – Poids du lest – Ballastgewicht – Peso de lastre



SH1210					
H-CATR (m)	13.7	19.7	25.7	31.7	37.7
(t)	36	54	54	60	60
n°	12xA	18xA	18xA	20xA	20xA

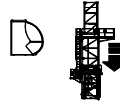
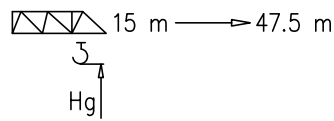


SH1210				
H-CAF32 (m)	18.7	24.7	30.7	33.7
(t)	36	54	54	54
n°	12xB	18xB	18xB	18xB

SH1210						
H-CAF38 (m)	13	19	25	31	37	40
(t)	36	54	54	54	60	72
n°	12xA	18xA	18xA	18xA	20xA	24xA

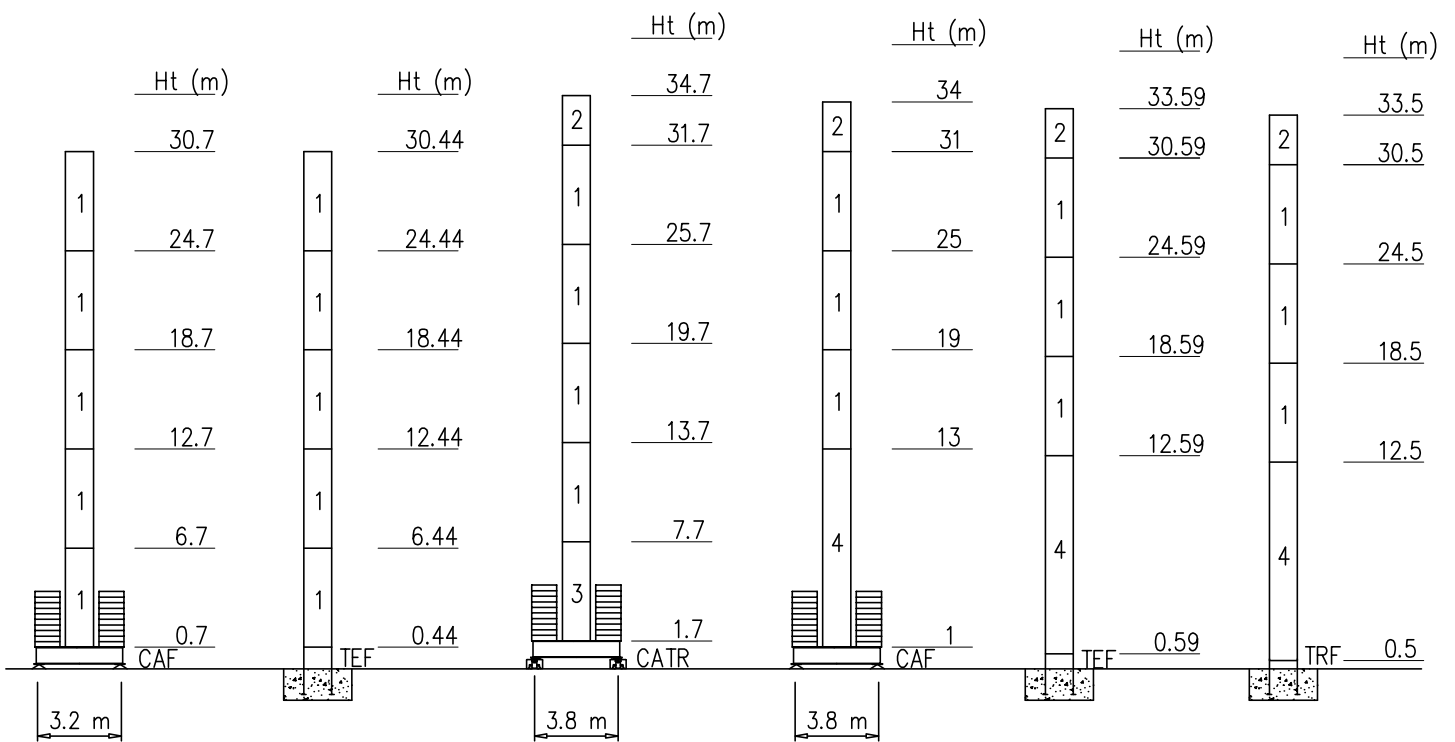
Torre/Reazioni – Masts/Reactions – Mat/Réactions – Maste/Eckdrücke – Mástil/Reacciones – Tramo/Reacções

SH1210 | EN14439-D25

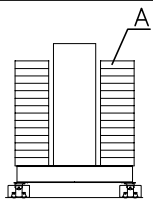


4	B0120	2/2
3	B0060	2/2
2	ST030	2/2
1	ST060	2/2

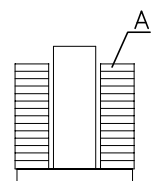
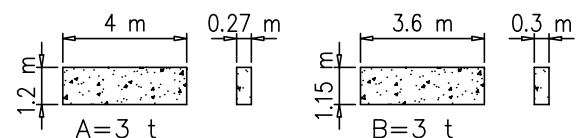
- Hg=Ht-1 m
- ◻ Hg=Ht-1.8 m



Peso zavorra – Ballast weight – Poids du lest – Ballastgewicht – Peso de lastre



SH1210					
H-CATR (m)	13.7	19.7	25.7	31.7	34.7
(t)	36	54	54	72	72
n°	12xA	18xA	18xA	24xA	24xA



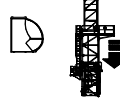
SH1210			
H-CAF32 (m)	18.7	24.7	30.7
(t)	36	54	66
n°	12xB	18xB	22xB

SH1210					
H-CAF38 (m)	13	19	25	31	34
(t)	36	54	54	54	72
n°	12xA	18xA	18xA	18xA	24xA

Torre/Reazioni – Masts/Reactions – Mat/Réactions – Maste/Eckdrücke – Mästil/Reacciones – Tramo/Reacções

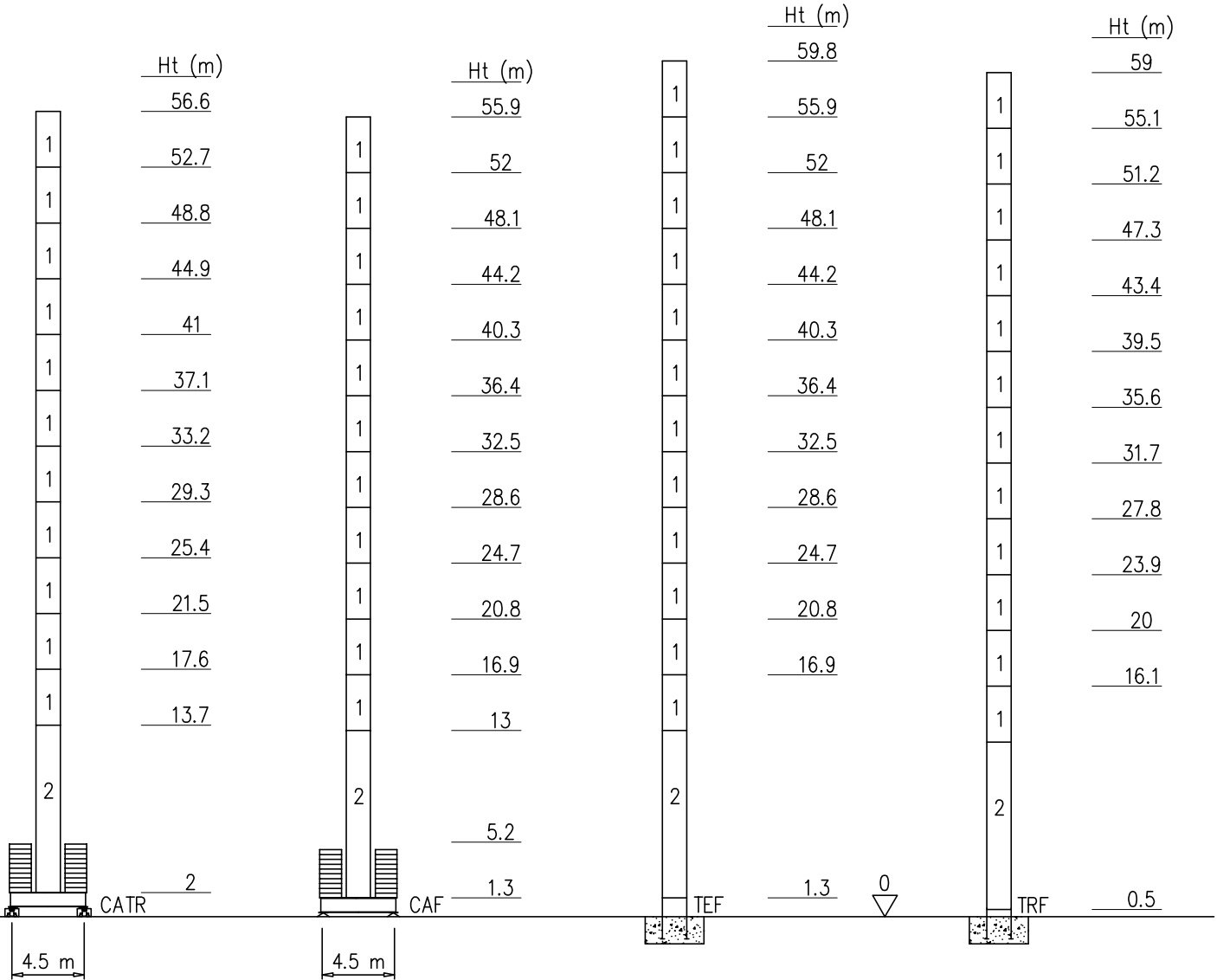
SK1700 FEM

15 m → 47.5 m

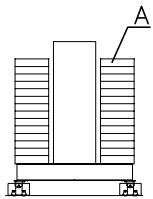


- Hg=Ht-1 m
- ◻ Hg=Ht-1.8 m

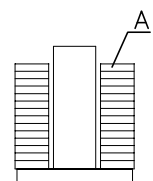
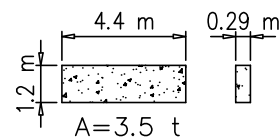
4	BPF039	4/4
3	ST117	2/2
2	BAF117	4/2
1	ST039	2/2



Peso zavorra – Ballast weight – Poids du lest – Ballastgewicht – Peso de lastre



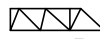
SK1700			
H-CATR (m)	48.8	52.7	56.6
(t)	105	119	126
n°	30xA	34xA	36xA

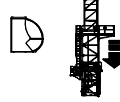


SK1700										
H-CAF (m)	24.7	28.6	32.5	36.4	40.3	44.2	48.1	52	55.9	
(t)	63	63	63	63	77	84	105	119	126	
n°	18xA	18xA	18xA	18xA	22xA	24xA	30xA	34xA	36xA	

Torre/Reazioni – Masts/Reactions – Mat/Réactions – Maste/Eckdrücke – Mästil/Reacciones – Tramo/Reacções

SK1700 EN14439-C25

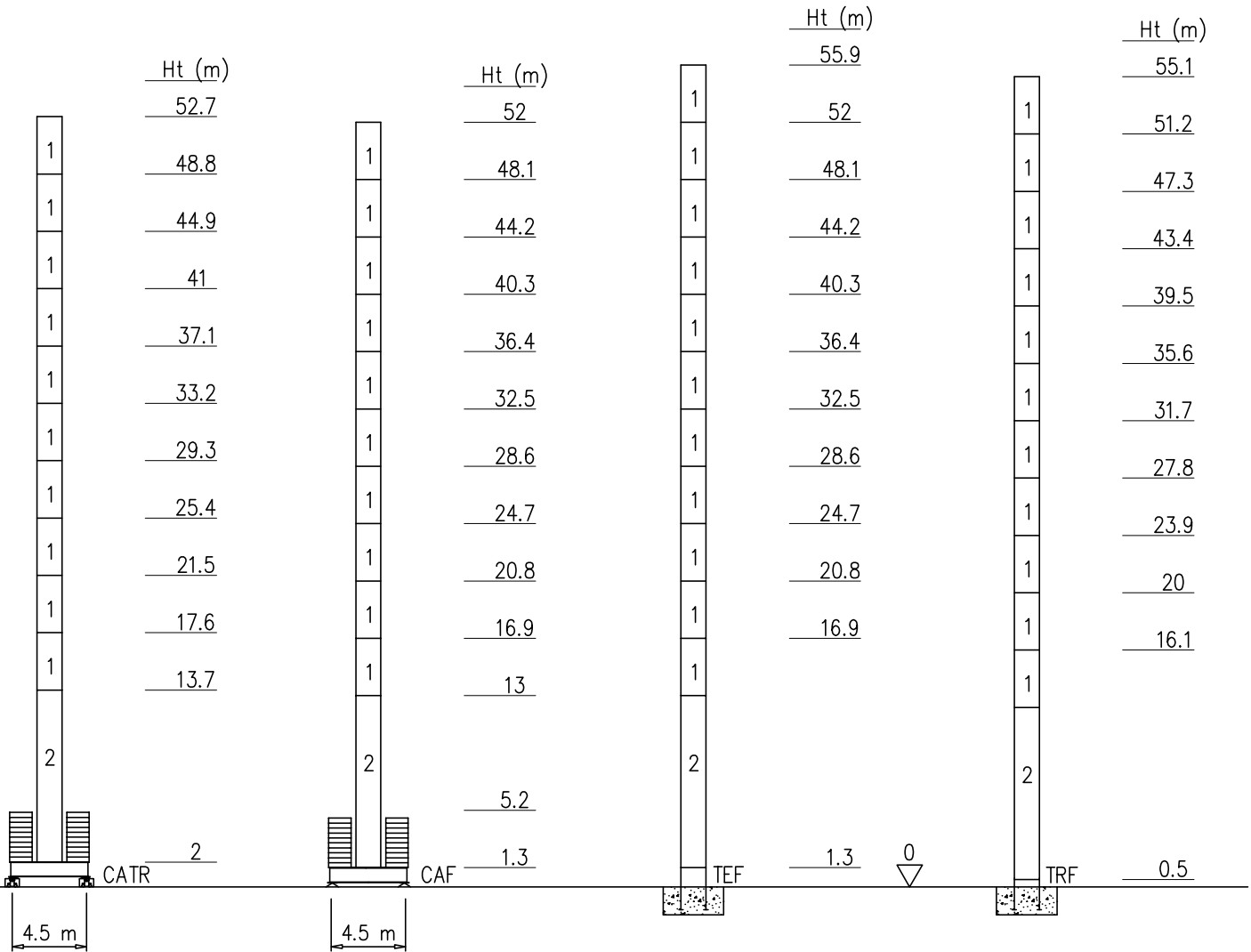
 15 m → 47.5 m



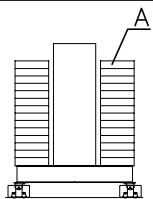
- Hg=Ht-1 m
- ◻ Hg=Ht-1.8 m



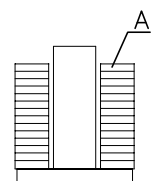
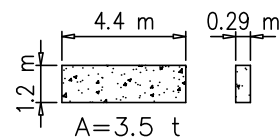
4	BPF039	4/4
3	ST117	2/2
2	BAF117	4/2
1	ST039	2/2



Peso zavorra – Ballast weight – Poids du lest – Ballastgewicht – Peso de lastre



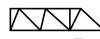
SK1700		
H-CATR (m)	48.8	52.7
(t)	119	126
n°	34xA	36xA

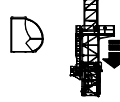


SK1700								
H-CAF (m)	24.7	28.6	32.5	36.4	40.3	44.2	48.1	52
(t)	63	63	63	63	84	98	112	119
n°	18xA	18xA	18xA	18xA	24xA	28xA	32xA	34xA

Torre/Reazioni – Masts/Reactions – Mat/Réactions – Maste/Eckdrücke – Mästil/Reacciones – Tramo/Reacções

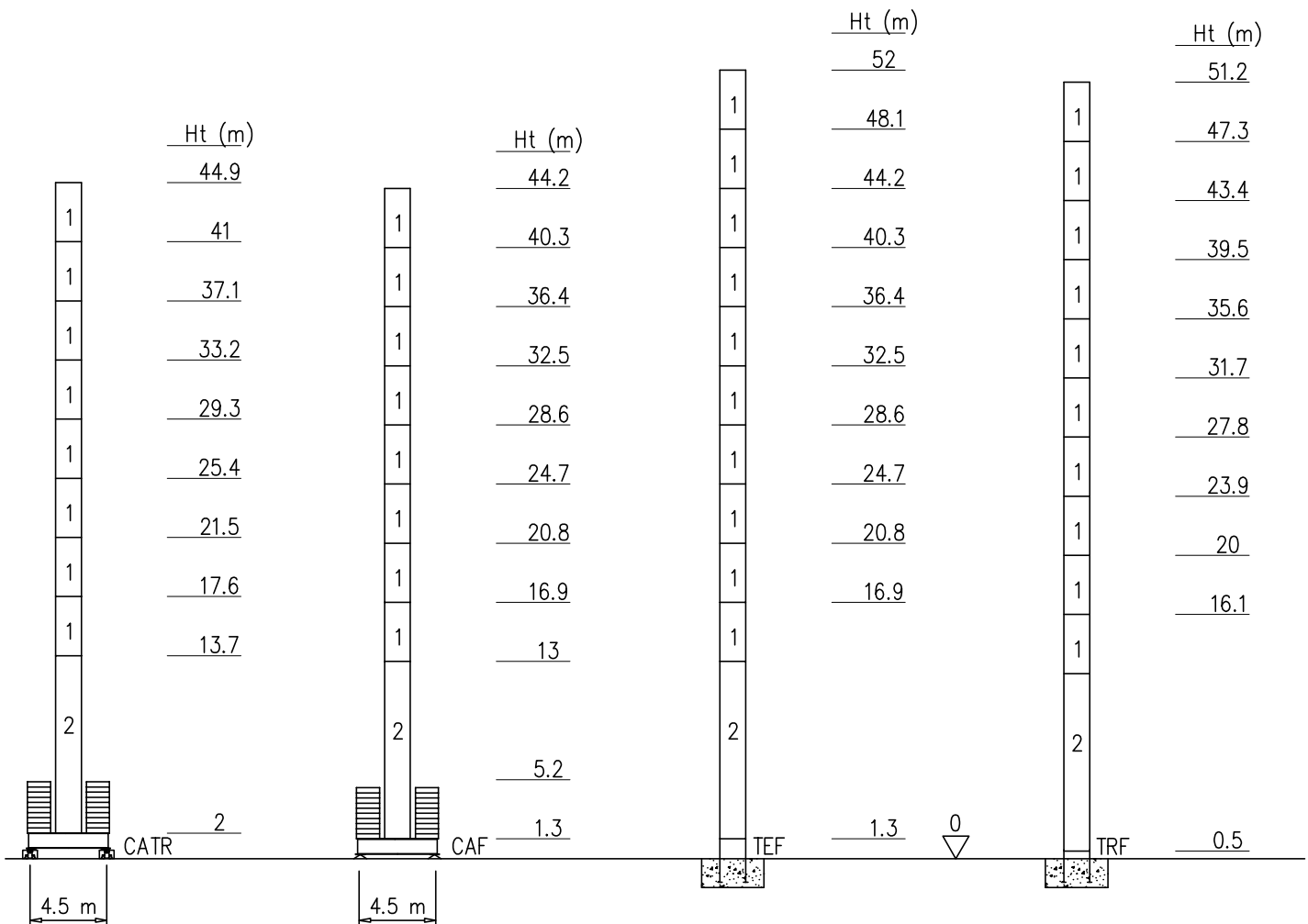
SK1700 EN14439-D25

 15 m → 47.5 m

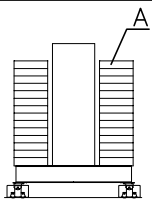


- Hg=Ht-1 m
- ◻ Hg=Ht-1.8 m

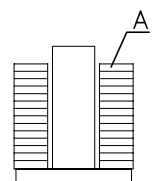
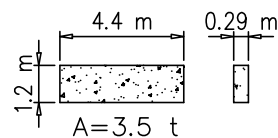
4	BPF039	4/4
3	ST117	2/2
2	BAF117	4/2
1	ST039	2/2



Peso zavorra – Ballast weight – Poids du lest – Ballastgewicht – Peso de lastre



SK1700	
H-CATR (m)	44.9
(t)	126
n°	36xA



SK1700						
H-CAF (m)	24.7	28.6	32.5	36.4	40.3	44.2
(t)	63	63	63	105	119	126
n°	18xA	18xA	18xA	30xA	34xA	36xA

Curve di carico – Courbes de charges – Load diagrams – LastKurven – Curvas de cargas

Pmax 2500 kg

	12000 kg	47.5 m	2	25	27.5	30	32.5	35	37.5	40	42.5	45	47.5	m
			<b>2500</b>	2500	2460	2110	1910	1730	1580	1450	1340	1230	1000	kg
	12000 kg	45 m	2	28	30	32.5	35	37.5	40	42.5	45			m
			<b>2500</b>	2500	2360	2120	1900	1720	1560	1420	1300			kg
	10800 kg	40 m	2	28.7	30	32.5	35	37.5	40					m
			<b>2500</b>	2500	2400	2160	1940	1760	1600					kg
	10800 kg	35 m	2	31.7	32.5	35								m
			<b>2500</b>	2500	2320	2200								kg
	9600 kg	30 m	2	30										m
			<b>2500</b>	2500										kg
	8400 kg	25 m	2	25										m
			<b>2500</b>	2500										kg
	7200 kg	20 m	2	20										m
			<b>2500</b>	2500										kg
	6000 kg	15 m	2	15										m
			<b>2500</b>	2500										kg

Pmax 6000/3000 kg

	12000 kg	47.5 m	2	12.4	15	17.5	20	22.5	27.5	30	32.5	35	37.5	40	42.5	45	47.5	m
			<b>6000</b>	6000	5450	4500	3900	3000	2460	2110	1910	1730	1580	1450	1340	1230	1000	kg
	12000 kg	45 m	2	13.8	15	17.5	20	22.5	24.5	27.5	30	32.5	35	37.5	40	42.5	45	m
			<b>6000</b>	6000	5450	4500	3900	3370	3000	2650	2360	2120	1900	1720	1560	1420	1300	kg
	10800 kg	40 m	2	14.1	15	17.5	20	22.5	25	27.5	30	32.5	35	37.5	40			m
			<b>6000</b>	6000	5450	4500	3900	3300	3000	2690	2400	2160	1940	1760	1600			kg
	10800 kg	35 m	2	15.5	15	17.5	20	22.5	25	28.5	30	32.5	35					m
			<b>6000</b>	6000	5450	4500	4100	3700	3400	3000	2500	2320	2200					kg
	9600 kg	30 m	2	16	17.5	20	22.5	25	29	30								m
			<b>6000</b>	6000	4500	4100	3700	3400	3000	2800								kg
	8400 kg	25 m	2	15.9	17.5	20	22.5	25										m
			<b>6000</b>	6000	4500	4100	3700	3500										kg
	7200 kg	20 m	2	15	17.5	20												m
			<b>6000</b>	6000	4500	4000												kg
	6000 kg	15 m	2	15														m
			<b>6000</b>	6000														kg

Pmax 4000/2000 kg

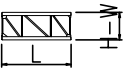
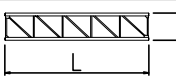
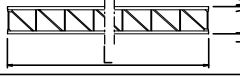


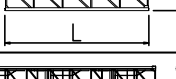
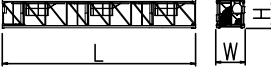
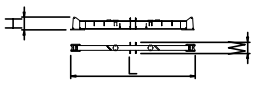
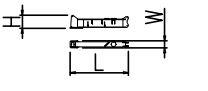

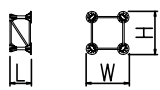
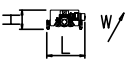
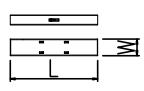
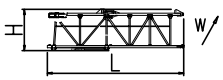
	12000 kg	47.5 m	2	17.4	20	22.5	25	27.5	30	32.5	35	37.5	40	42.5	45	47.5	m	
			<b>4000</b>	4000	3410	2990	2630	2460	2110	1910	1730	1580	1450	1340	1230	1000	kg	
	12000 kg	45 m	2	19.4	22.5	25	27.5	30	32.5	35	37.5	40	42.5	45				m
			<b>4000</b>	4000	3370	2970	2650	2360	2120	1900	1720	1560	1420	1300				kg
	10800 kg	40 m	2	19.8	22.5	25	27.5	30	32.5	35	37.5	40						m
			<b>4000</b>	4000	3520	3100	2690	2400	2160	1940	1760	1600						kg
	10800 kg	35 m	2	21.8	25	27.5	30	32.5	35									m
			<b>4000</b>	4000	3560	3180	2870	2320	2200									kg
	9600 kg	30 m	2	22.5	25	27.5	30											m
			<b>4000</b>	4000	3730	3360	2800											kg
	8400 kg	25 m	2	22.4	25													m
			<b>4000</b>	4000	3900													kg
	7200 kg	20 m	2	20														m
			<b>4000</b>	4000														kg
	6000 kg	15 m	2	15														m
			<b>4000</b>	4000														kg



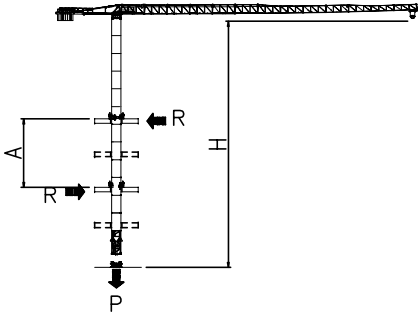
PESI E INGOMBRI – PACKING LIST – LISTE DE COLISAGE – GEWICHT UND ABMESSUNGEN

Denominazione Description	Disegno Draw	Pezzi Pieces	Dimensioni-Dimensions (mm)			Peso-Weight (kg)			
			L	W	H	Unit	Total		
Elemento di braccio Jib element Elément de èche Elemento de flecha	n°9		1	5500	1480	2290	1163	–	
	n°8		1	5260	1200	2150	722	–	
	n°7		1	5225	1200	2060	635	–	
	n°6		1	5200	1200	1630	500	–	
	n°5		1	5160	1200	1630	370	–	
	n°4		1	5140	1200	1610	350	–	
	n°3		1	5110	1200	1610	250	–	
	n°2		1	5090	1200	1260	210	–	
	n°1		1	5090	1200	1260	200	–	
	Punta braccio		1	700	1200	500	55	–	
Controbraccio completo Complete counterjib Contreflèche complète Contraflecha completa		1	10660	1750	1480	1850	–		
Gruppo girevole Slewing group Table tournante Grupo giratorio	SK1700		1	2300	1810	2900	5900	–	
	S1200		1	2450	1810	2900	3000	–	
Carrello Trolley Chariot Carretilla	P6		1	1600	1620	710	320	–	
Ballatoio con cabina Access balcony with cabin Porte cabine Balcòn corrido con cabina		1	2500	2150	2450	1000	–		
Blocchi contrappeso Counterweight block Contre-poids Bloques de contrapeso	VX24		VS12	2	1000	200	2500	1200	2400
	VS12			VX24	4	1000	400	2500	2400
Elemento di torre Mast element Elément de mature Elemento de torre	ST039 BPF039		SK1700	–	3900	1785	1785	1750 2350	–
	ST052		SK1700	–	5200	1785	1785	2250	–
	ST117		SK1700	–	11700	1785	1785	4690	–

PESI E INGOMBRI – PACKING LIST – LISTE DE COLISAGE – GEWICHT UND ABMESSUNGEN

Denominazione Description	Disegno Draw	Pezzi Pieces	Dimensioni-Dimensions (mm)			Peso-Weight (kg)		
			L	W	H	Unit	Total	
Elemento di torre Mast element Elément de mât Elemento de torre	ST030 	SH1210	-	3000	1210	1210	840	-
	ST060 	SH1210	-	6000	1210	1210	1490	-
	ST120 	SH1210	-	12000	1210	1210	3000	-
	B0060 	SH1210	-	6000	1210	1210	2120	-
	B0120 	SH1210	-	12000	1210	1210	3500	-
	BL060 	SH1210	-	6000	-	-	-	-
Elemento di base Base element Mat de base Elemento de base	BAF117 	SK1700	-	11700	1785	1785	7100	-
Carro di base Base carriage Chassis de base Cruceta de base		3.2x3.2	1	4670	520	660	1160	1160
		3.8x3.8	1	5700	520	660	2280	2280
		4.5x4.5	1	6670	500	1260	3180	3180
		3.2x3.2	2	2180	340	660	550	1100
		3.8x3.8	2	2700	340	660	1090	2180
		4.5x4.5	2	3100	500	1260	1400	2800
Elemento a perdere Disposable frame Chassis a perdre Bastidor desechable		SH1210	1	2015	1210	1210	800	-
		SK1700	1	1840	1910	1910	1430	-
Elemento recuperabile Recoverable frame Chassis récupérable Bastidor recuperable		SH1210	1	400	1700	1700	610	-
		SK1700	1	1300	2170	2170	1720	-
Bogie di traslazione Driven bogie Boggie motorisèe Balancin de traslaciòn			4	1160	700	600	700	2800
Blocco zavorra di base Base ballast block Lest de base Bloque de lastre		3.2x3.2	-	3600	1150	300	3000	-
		3.8x3.8	-	4000	1200	270	3000	-
		4.5x4.5	-	4400	1200	290	3500	-
Corsoio di montaggio Climbing cage Cage de montage Jaula de montaje		SG1200	1	8300	1600	1500	3000	-
		SK1700	1	8300	2600	2500	6000	-

GRU IN CAVEDIO – TELESCOPAGE SUR DALLES – CLIMBING CRANE – KLETTERKRANE IM GEBAUDE



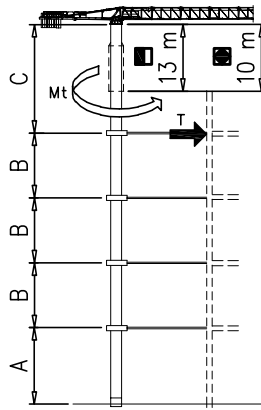
SK1700	H (m)	A (m)
	39	Min 9
Apertura passaggio gru Opening for crane passing 		Max 12

SH1210	H (m)	A (m)
	30	Min 6
Apertura passaggio gru Opening for crane passing 		Max 9

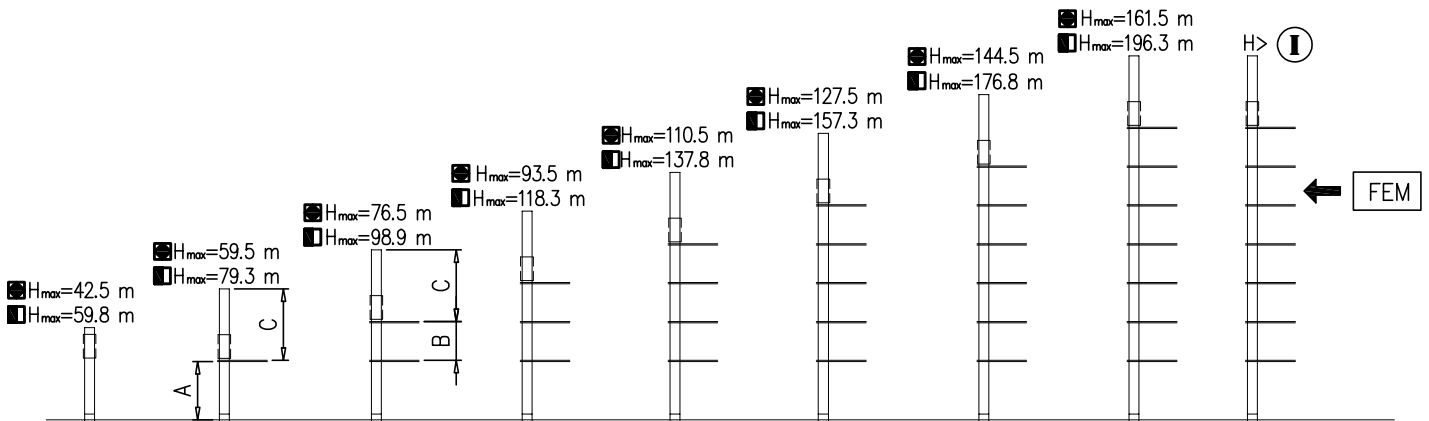
SOPRALZO IDRAULICO – TELESCOPABLE – EXTERNAL CLIMBING – KLETTERKRANE

FEM

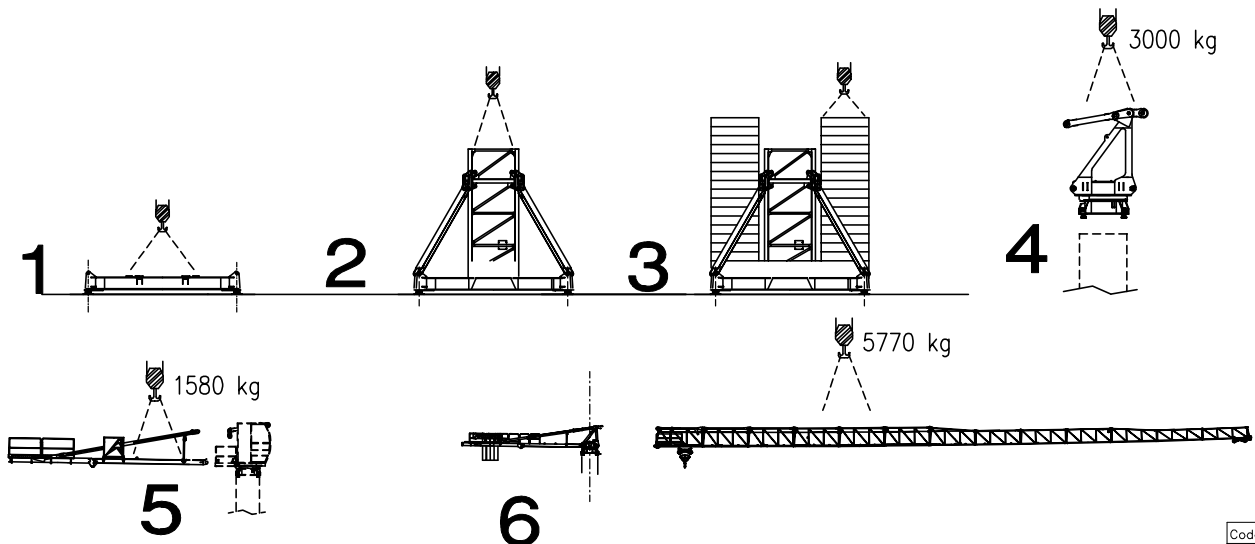
	SK1700
MAX C	32.5 m
B	19.5 m
A	46.8 m



	SH1210
MAX C	27 m
B	17 m
A	32.5 m



Montaggio – Montage – Erection – Montage – Montaje – Montagem



Meccanismi – Mechanisms – Mécanismes – Antriebe – Mecanismos

Sollevamento V15.40 Hoisting Levage Heben Elevaciõn Elevaçao												V15.40 11 kW 20 kVA  172 m 344 m (L)
	m/min	5	13	19	30	45	2.5	6.5	9.5	15	22.5	
	t	2	2	2	1.4	0.56	4	4	4	2.8	1.12	

Sollevamento V15.40 Hoisting Levage Heben Elevaciõn Elevaçao								V15.40 11 kW 20 kVA  172 m 344 m (L)
	m/min	5	13	19	30	45		
	t	2.5	2.5	1.9	1.4	0.56		

Sollevamento V25.60 Hoisting Levage Heben Elevaciõn Elevaçao												V25.60 18.4 kW 37 kVA  172 m 344 m (L)		
	m/min	7	18	28	42	56	65	3.5	9	14	21		28	32.5
	t	3	3	3	2.25	1.5	0.9	6	6	6	4.5		3	1.8

Carrello Trolleying Distribution Katzfahren Distribuciõn Distribuiçao			0 → 55	m/min	2.2 kW	Potenza elettrica necessaria Puissance électrique nécessaire Necessary electric power Anschlusswert – Potencia
Rotazione Slewing Orientation Schwenken Orientaciõn Rotaçao			0 → 0,9	giri/min tr/min rp/min	2.2 kW @ 1200rpm	
Traslazione Travelling Translation Kranfahren Traslaciõn Traslaçao			0 → 20	m/min	3.7 kW	

Rete elettrica – Réseau – Mains supply – Netzstrom – Red – Rede electrica	400V – 50 Hz
---------------------------------------------------------------------------	--------------

**AFM Gru** FMgru s.r.l.  
via Emilia 11-29010 Pontenure PC ITALY  
tel. 0523/510446 ric.aut. fax 0523/510365  
www.fmgru.it e-mail: info@fmgru.com

FEM 1.001 – A4  
EN 14439 – C25 – D25



Documento commerciale non contrattuale  
Per tutte le informazioni tecniche riferirsi  
alle corrispondenti istruzioni

Unverbindliches Vertriebsdokument.  
Für technische Informationen, siehe die  
entsprechenden Anweisungen.

This commercial document is not legally  
binding. For any technical information, please  
refer to the corresponding instructions.

Documento comercial no contractual  
Para cualquier información técnica,  
ver la noticia correspondiente.

Code: 15ICA37T25A0 P.12  
Rev. 4 Data 13.09.16